



HDMI/ KVM Extender

User Manual

Model : HKM01E

HDMI & USB Keyboard Mouse CAT5e Extender 1080p 150M



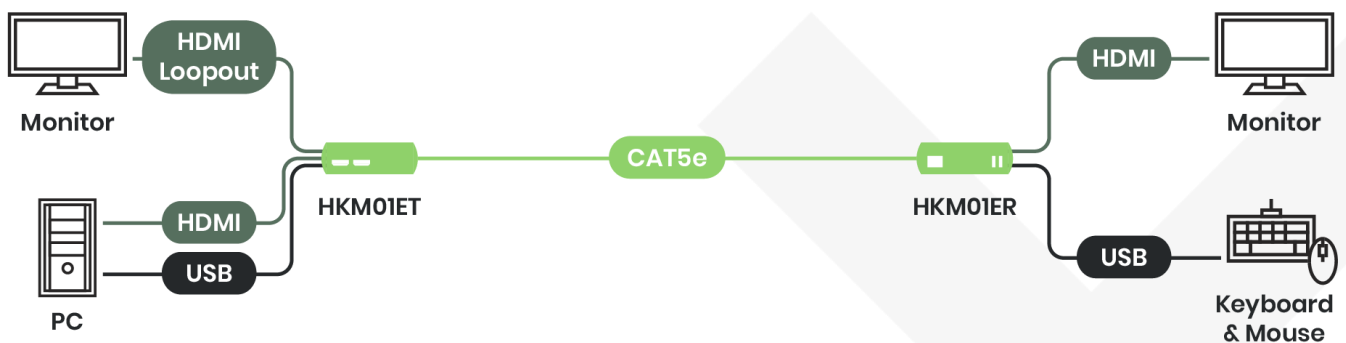
Introduction

HKM01E is an HDMI KVM extender that sends HDMI & USB signal over one CAT5e or greater cable. Its TX unit has a local loop out for an extra HDMI monitor. And there are 2 built-in USB ports at the RX unit to connect with one keyboard and one mouse. It is an ideal solution for CCTV, digital signage, home network integration, and so on.

Features

- Resolutions up to 1080p@60Hz & 1920 x 1200.
- Signal extension up 160M over CAT6.
- Built-in HDMI loop-out port for an extra HDMI display at TX side.
- Built-in 2 USB ports at Rx side.
- Workable with SR01X (IP repeater) for longer distance.

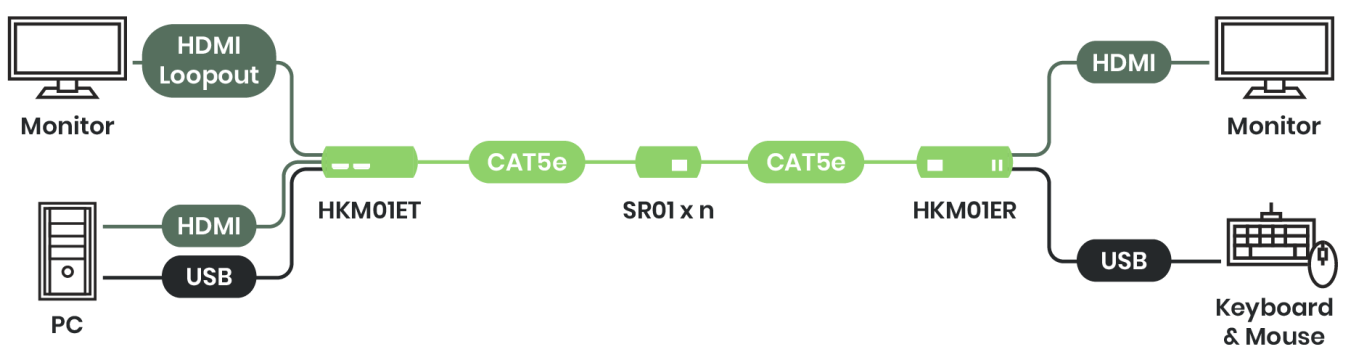
Installation view



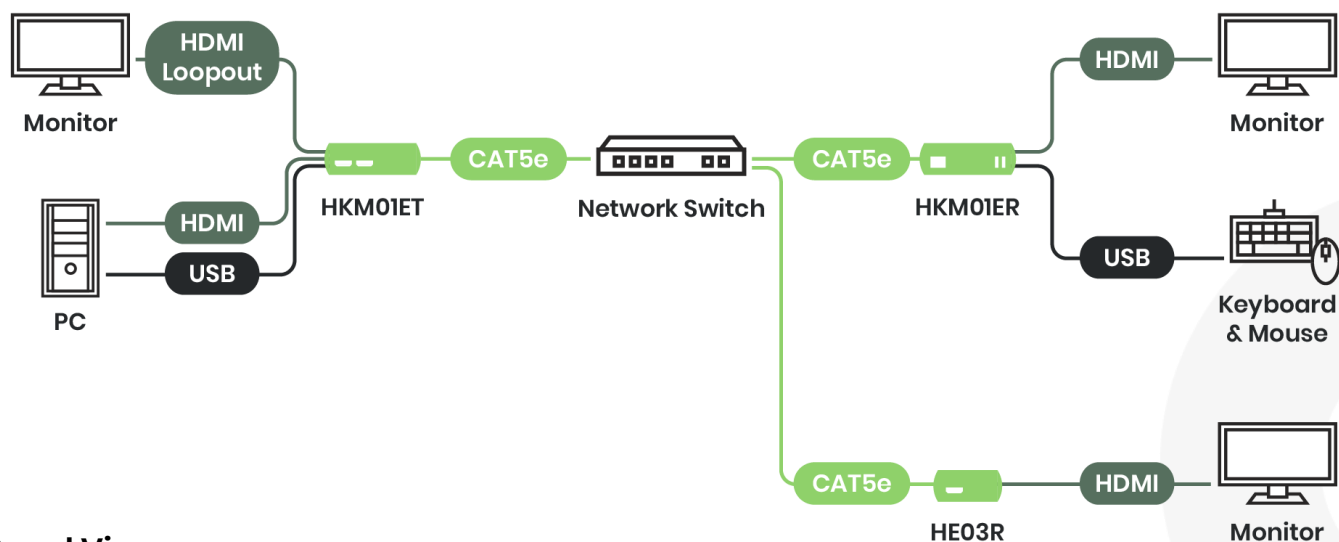
Optional Model: SR01 Signal Repeater (order separately)

- Extend data signal for an additional 120meters.
- [Application for HKM01E signals for extra long range transmission.](#)
- [Ability to cascade connection with multiple SR01 for long range transmission](#)
- Built in LED status indication.
- External power required.
- Plug and play for easy installation.

Work with HKM01E CAT5 Extender

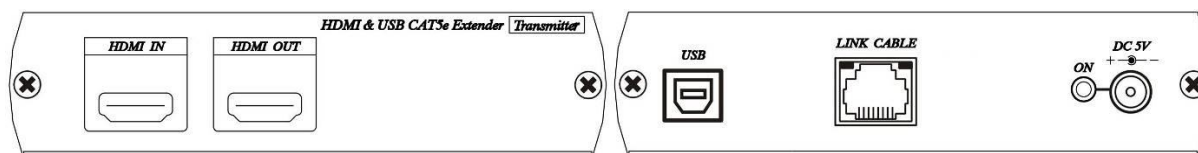


HDMI over IP Solution: support point to many connections via network switch

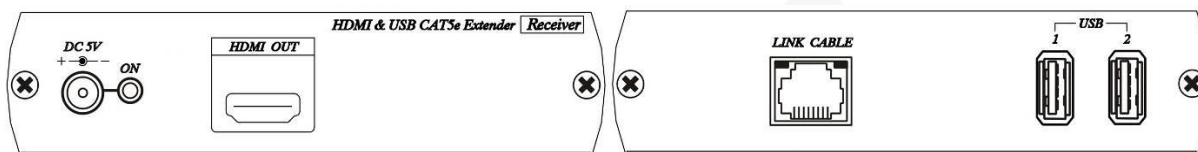


Panel View

HKM01ET



HKM01ER



LED Indication Status

Front Panel Green LED:	Power ON/OFF
RJ45 LED: Orange Flash:	Data transmission
Green On:	Linking

RJ45 Define

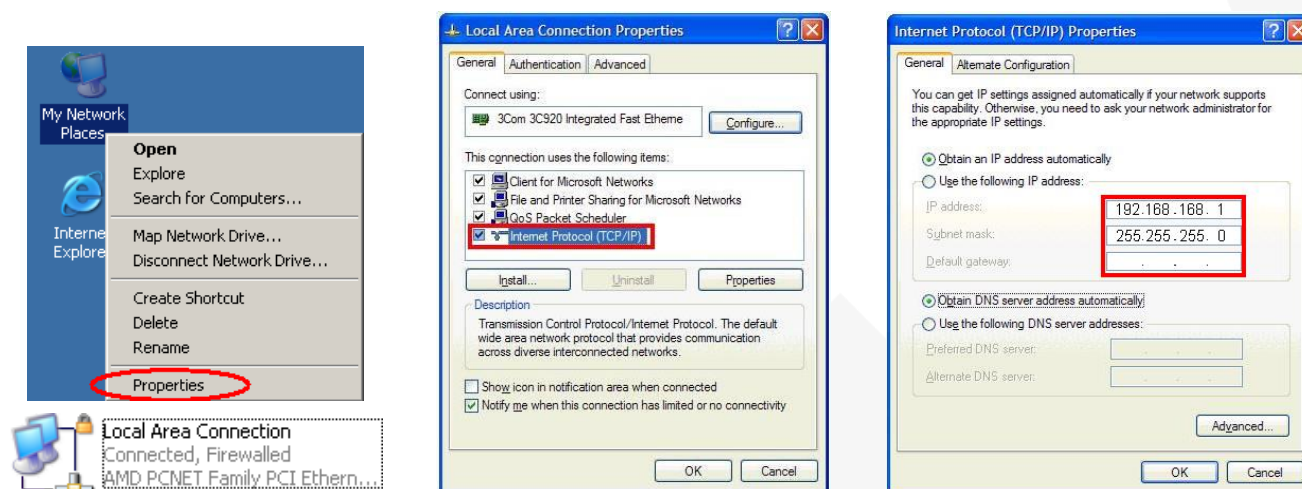
Link Cable (TIA/EIA-568-B)

1. Orange-white	Data 1 +
2. Orange	Data 1 -
3. Green-white	Data 2 +
4. Blue	Data 3 +
5. Blue-white	Data 3 -
6. Green	Data 2 -
7. Brown-white	Data 4 +
8. Brown	Data 4 -

Computer IP Address Setting

System default IP address is 192.168.168.55 for HKM01ET, 192.168.168.56 for HKM01ER (subnet mask 255.255.255.0). Your computer must set in same subnet mask to enter the web setup page.
To change the IP address of computer please follow below step: (based on Windows XP):

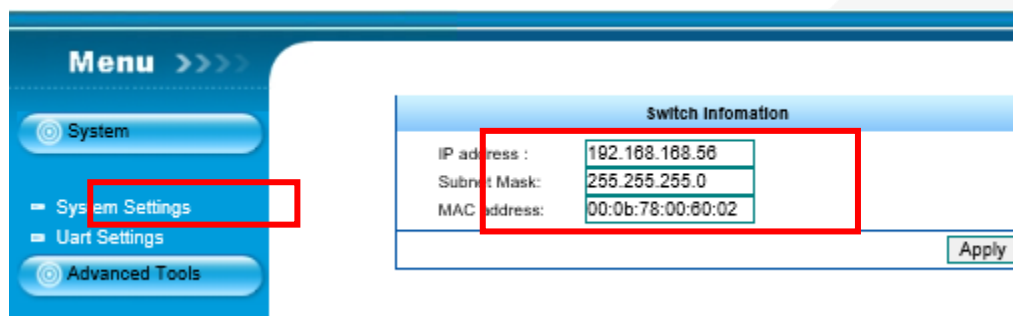
Right click on "My Network Place" → "Properties" then right click on "Local Area Connection" → "Properties" then double click on "Internet Protocol (TCP/IP)" to setting as below:
(IP address 192.168.168.1, sub mask 255.255.255.0)



Login in to the web

Use CAT5e cable to connect transmitter/receiver RJ45 port to PC LAN port, enter the IP address of TX/RX in the web browser.

After login to the web, click System Settings you can change IP address, Subnet Mask, MAC address at System page, then click Apply to finish setting.



Resolutions

640x480@60Hz
800x600@60 Hz
1024x768@60 Hz
720x480p@60 Hz
720x576p@50 Hz
1280x720p@60 Hz
1280x720p@50 Hz
1920x1080i@60 Hz
1920x1080i@50 Hz
1920x1080p@60Hz

Cable

Video Link cable using high quality CAT5e UTP/STP/FTP or CAT6 UTP cable.

Caution

1. This device not support wireless and gaming keyboard mouse.
2. The cabling must away from any equipment with electromagnetic wave, i.e.: microwave, radio equipment, high voltage.

Package Include

HKM01ET Transmitter x 1
HKM01ER Receiver x 1
USB A to B cable x 1
DC 5V 2Amp power adapter x 2

Specification:

ITEM NO.	HKM01ET	HKM01ER
Support		
Max. Video Resolution	1080p@60Hz	
Max. Transmission Distance	150M over CAT5e/ CAT6	
Ports & Interfaces		
Video Input	1 x HDMI Type A	1 x RJ45
Video Output	1 x RJ45	1 x HDMI Type A
Video Loop-out	1 x HDMI Type A	
USB Interface	1 x USB Type B	2 x USB Type A
Power		
Power Supply	DC 5V 2A	DC 5V 2A
Power Consumption	1200mA	800mA
Ambient Temperature		
Operation	0 to 55°C	
Storage	-20 to 85°C	
Humidity	Up to 95%	
Physical Characteristics		
Dimensions	125 x 125 x 30mm	125 x 125 x 30mm
Weight	355g	350g